

## My Friend Fawn



**VTech understands that a child's needs and abilities change as they grow and with that in mind we develop our toys to teach and entertain at just the right level...**

## **vtech** Baby

**Toys that will stimulate their interest in different textures, sounds and colours**

### **I am...**

...responding to colours, sounds and textures

...understanding cause and effect

...learning to touch, reach, grasp, sit-up, crawl and toddle

**Birth-36 months**



## **Pre-School**

**Interactive toys to develop their imagination and encourage language development**

### **I want...**

...to get ready for school by starting to learn the alphabet and counting

...my learning to be as fun, easy and exciting as can be

...to show my creativity with drawing and music so my whole brain develops

**3-6 years**



## **Electronic Learning Computers**

**Cool, aspirational and inspiring computers for curriculum related learning**

### **I need...**

...challenging activities that can keep pace with my growing mind

...intelligent technology that adapts to my level of learning

...National Curriculum based content to support what I'm learning at school

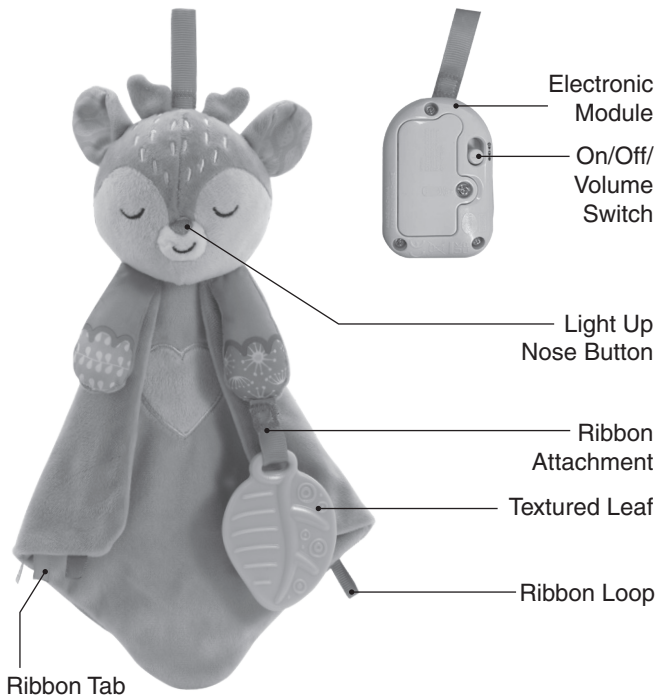
**4-10 years**



To learn more about this and other VTech® products, visit [www.vtech.co.uk](http://www.vtech.co.uk)

# INTRODUCTION

Introducing **My Friend Fawn** by VTech®! This adorable, cuddly little friend is designed to comfort your little one. Fawn easily transforms from a soothing blanket to a dummy holder with a variety of soft fabrics that provide comforting tactile stimulation.



# INCLUDED IN THIS PACKAGE

- **My Friend Fawn**
- Textured Leaf
- Quick Start Guide

## WARNING

All packing materials such as tape, plastic sheets, packaging locks, removable tags, cable ties, cords and packaging screws are not part of this toy and should be discarded for your child's safety.

## NOTE

Please save this Instruction Manual as it contains important information.

## WARNING:

**Keep this soft toy out of the sleeping environment for babies under twelve months to avoid suffocation risk.**

# INSTRUCTIONS

## WARNING:

Adult assembly required for battery installation.  
Keep batteries out of reach of children.



## WARNING!



Contains button battery.

A button battery can cause serious injuries if swallowed or placed inside any part of the body.

Individual battery is hazardous. Dispose of used batteries immediately. Keep new and used batteries away from children.

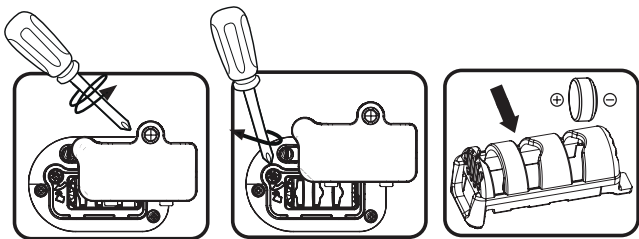
If you think batteries might have been swallowed or placed inside any part of the body, seek immediate medical attention.

Australia

If you think batteries might have been swallowed or placed inside any part of the body, immediately call the 24-hour Poisons Information Centre on 13 11 26 for fast, expert advice.

## BATTERY REMOVAL AND INSTALLATION

1. Make sure the unit is turned **off**.
2. Find the battery cover located on the back of the **Electronic Module** inside the fawn, use a screwdriver to loosen the screw and then open the battery cover.
3. Locate the screw for the battery unit, use a screwdriver to turn the screw clockwise to release the battery unit.
4. If used batteries are present, remove these batteries from the unit by pulling up on one end of each battery.
5. Install 3 new button cell batteries (LR44) following the diagram inside the battery unit.
6. Insert the battery unit, you will hear it click into place when inserted correctly.
7. Replace the battery cover and tighten to the screws to secure.



## **IMPORTANT: BATTERY INFORMATION**

- Insert batteries with the correct polarity (+ and -).
- Do not mix old and new batteries.
- Do not mix alkaline, standard (carbon-zinc) or rechargeable batteries.
- Only batteries of the same or equivalent type as recommended are to be used.
- Do not short-circuit the supply terminals.
- Remove batteries during long periods of non-use.
- Remove exhausted batteries from the toy.
- Dispose of batteries safely. Do not dispose of batteries in fire.

### **RECHARGEABLE BATTERIES:**

- Remove rechargeable batteries (if removable) from toy before charging.
- Rechargeable batteries are only to be charged under adult supervision.
- Do not charge non-rechargeable batteries.
- Do not charge non-rechargeable batteries.

## Disposal of batteries and product



The crossed-out wheellie bin symbols on products and batteries, or on their respective packaging, indicates they must not be disposed of in domestic waste as they contain substances that can be damaging to the environment and human health.



The chemical symbols Hg, Cd or Pb, where marked, indicate that the battery contains more than the specified value of mercury (Hg), cadmium (Cd) or lead (Pb) set out in the Batteries and Accumulators Regulation.

The solid bar indicates that the product was placed on the market after 13th August, 2005.

 Please dispose of your product and batteries responsibly.

In the UK, give this toy a second life by disposing of it at a small electricals collection point\* so all of its materials can be recycled.

Learn more at:

[www.vtech.co.uk/recycle](http://www.vtech.co.uk/recycle)

[www.vtech.com.au/sustainability](http://www.vtech.com.au/sustainability)

\* Visit [www.recyclenow.com](http://www.recyclenow.com) to see a list of collection points near you.



## CAUTION:

Adult assembly required. For your child's safety, do not let your child play with the toy until it is fully assembled.




## INSTRUCTIONS FOR WASHING

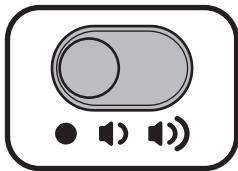
The **My Friend Fawn** is machine washable. Please remove the **Electronic Module** from the fawn before cleaning.

1. Open the hook-and-loop closure on the back of the fawn and remove the **Electronic Module**.
2. Follow the care instructions on the fabric tag.
3. After washing, re-insert the **Electronic Module** and secure the hook-and-loop closure.

# PRODUCT FEATURES

## 1. On/Off/Volume Switch

To turn the unit **On**, slide the **On/Off/Volume Switch** located on the **Electronic Module** to the Low  or High volume  position. You will hear a sing-along song, a welcoming phrase and sounds. To turn the unit **Off**, slide the **On/Off/Volume Switch** to the **Off**  position.



## 2. Automatic Shut-Off

To preserve battery life, the **My Friend Fawn** will automatically shut off after each audio response. The unit can be turned on again by pressing the **Light Up Nose Button**.

### NOTE

If the unit powers down or if the light fades out during play, please install a new set of button cell batteries.

# ACTIVITIES

## 1. Light Up Nose Button

Press the fawn's **Light Up Nose Button** to hear a variety of soothing melodies and gentle nature sounds. Press and hold the **Light Up Nose Button** to hear sweet sounds and loving phrases. The light will flash with the voice and fade in and out with the music and sounds.





## 2. Ribbon Attachment and Textured Leaf

Attach the textured Leaf or attach your own dummy using the **Ribbon Attachment**.



## NOTE

Before using the **Textured Leaf** for the first time and after each use, wash with warm soapy water, then rinse. DO NOT use boiling water, steam, a microwave or dishwasher to clean the **Textured Leaf**.

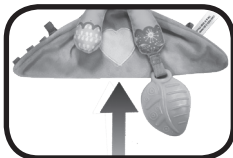
## 3. Fold Up Fawn

Transform the fawn blanket into a fabric fawn to cuddle.

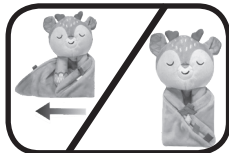
## Folding Instructions

To change the fawn to a fabric toy, please follow these steps:

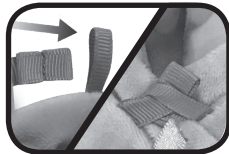
1. Lay the fawn flat, then fold the bottom point of the square back and in half to form a triangle.



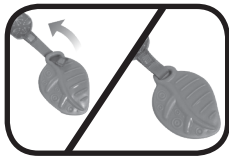
2. Fold the right side in, then fold the left side on top, tucking the arms inside.



3. Secure the blue **Ribbon Loop** from the right side over the **Ribbon Tab** on the left.



4. Attach the included **Textured Leaf** or a dummy (sold separately) to the **Ribbon Attachment** with the hook-and-loop closure.



## MELODY LIST

1. Toyland
2. Twinkle, Twinkle, Little Star
3. Bicycle Built for Two
4. Weber - Cradle Song
5. Tchaikovsky - Sleeping Beauty Waltz
6. Diddle, Diddle, Dumpling
7. Beethoven - Für Elise
8. Grandfather's Clock
9. White Coral Bells
10. Good Morning Merry Sunshine
11. London Bridge
12. Hickory, Dickory, Dock
13. Listen to the Mockingbird
14. Hey, Diddle, Diddle
15. Shannon - Irish Lullaby
16. Mary Had a Little Lamb
17. Rock-A-Bye Baby
18. Did You Ever See a Lassie?
19. Sailing, Sailing
20. Debussy - Clair de Lune
21. Home Sweet Home
22. Little Bo Peep
23. Little Miss Muffet
24. Teddy Bears' Picnic
25. Hush, Little Baby

# SONG LIST

## Song 1

Play time, nap time,  
I'm ready for some cuddle time.

## Song 2

You and me, together we'll be,  
Best friends for ever.  
Let's have a great big hug.

## Song 3

Twinkle, twinkle, little star,  
How I wonder what you are.

# CARE & MAINTENANCE

1. Keep the unit clean by wiping it with a slightly damp cloth.
2. Keep the unit out of direct sunlight and away from any direct heat sources.
3. Remove the button cell batteries if the unit will not be in use for an extended period of time.
4. Do not drop the unit on a hard surface and do not expose the unit to excess moisture.
5. The fawn is machine washable. Please remove the **Electronic Module** before cleaning and follow the washing instructions on the tag.

# TROUBLESHOOTING

If for some reason the unit stops working or malfunctions, please follow these steps:

1. Please turn the unit **Off**.
2. Interrupt the power supply by removing the batteries.
3. Let the unit sit for a few minutes, then replace the batteries.
4. Turn the unit **On**. The unit should now be ready to be played with again.
5. If the unit still does not work, install a new set of batteries.

# CONSUMER SERVICES

Creating and developing **VTech®** products is accompanied by a responsibility that we at **VTech®** take very seriously. We make every effort to ensure the accuracy of the information, which forms the value of our products. However, errors sometimes can occur. It is important for you to know that we stand behind our products and encourage you to call our Consumer Services Department with any problems and/or suggestions that you might have. A service representative will be happy to help you.

## **UK Customers:**

Phone: 0330 678 0149 (from UK) or +44 330 678 0149 (outside UK)  
Website: [www.vtech.co.uk/support](http://www.vtech.co.uk/support)

## **Australian Customers:**

Phone: 1800 862 155  
Website: [support.vtech.com.au](http://support.vtech.com.au)

## **NZ Customers:**

Phone: 0800 400 785  
Website: [support.vtech.com.au](http://support.vtech.com.au)

# PRODUCT WARRANTY/ CONSUMER GUARANTEES

## **UK Customers:**

Read our complete warranty policy online at [vtech.co.uk/warranty](http://vtech.co.uk/warranty).

## **Australian Customers:**

**VTECH ELECTRONICS (AUSTRALIA) PTY LIMITED –  
CONSUMER GUARANTEES**

Under the Australian Consumer Law, a number of consumer guarantees apply to goods and services supplied by VTech Electronics (Australia) Pty Limited. Please refer to [vtech.com.au/consumerguarantees](http://vtech.com.au/consumerguarantees) for further information.

**Visit our website for more  
information about our products,  
downloads, resources and more.**

***www.vtech.co.uk***  
***www.vtech.com.au***



TM & © 2020 VTech Holdings Limited.  
All rights reserved.  
**Printed in China.**  
91-003924-011 (UK)